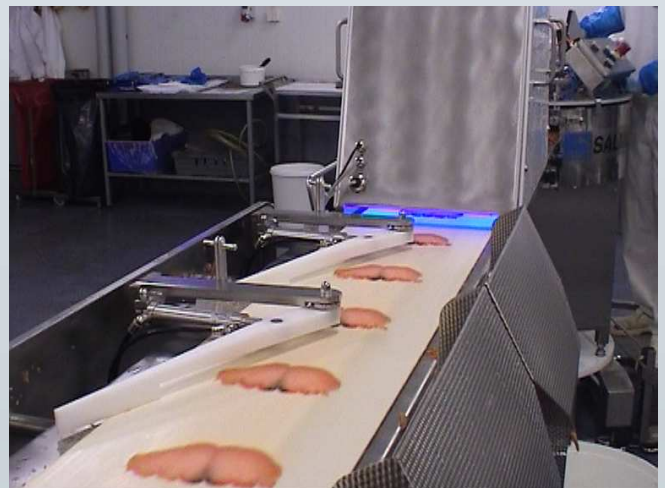


## Automatic Party Pack Line

The HILLERSLEV Party Pack Line consist of a vision system with a sorting unit for reject of the smallest slices. After the sorting unit the slices are re-aligned and wide slices are folded before stacking on plates. The weight of the packed items are controlled and rejected items are adjusted by the packing operators. Approved items are led directly to the vacuum packing machine.

The HILLERSLEV Party Pack Line is made in stainless steel AISI 304 and materials approved for foodstuff. All parts are constructed for a high hygienic standard and easy cleaning. All conveyor belts can be removed for cleaning without use of tools.

- Automatic packing of salmon slices
- Suitable for standard slicing units for frozen fish
- 200 slices/min with 3 operators
- 150-400g party plates
- Max 2 fish in each pack
- Automatic vision controle of each slice
- Automatic folding of wide slices
- Automatic re-alignment of slices before packing



### Specifications

Width of the handled slices:	100-230 mm
Width of folded slices:	130 mm
Temperature range:	-8°C to -12°C
Length of plates:	270-400 mm
Width of plates:	120-180 mm
Power:	3x400 VAC (25 amp)
Air:	6 bars (100l/min)
Overall length:	14000 mm (7500 without packing table and control scale)